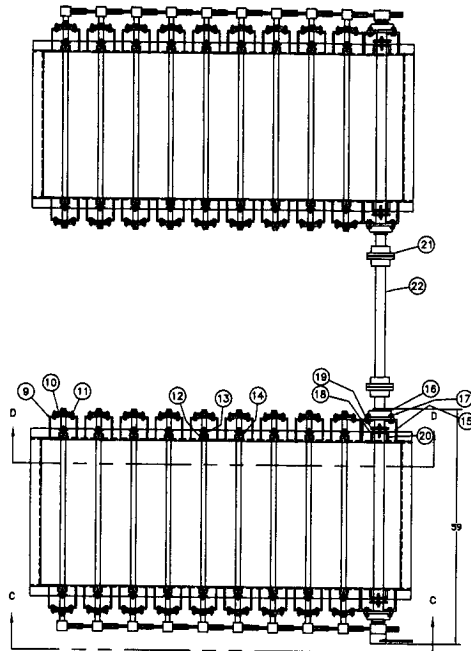
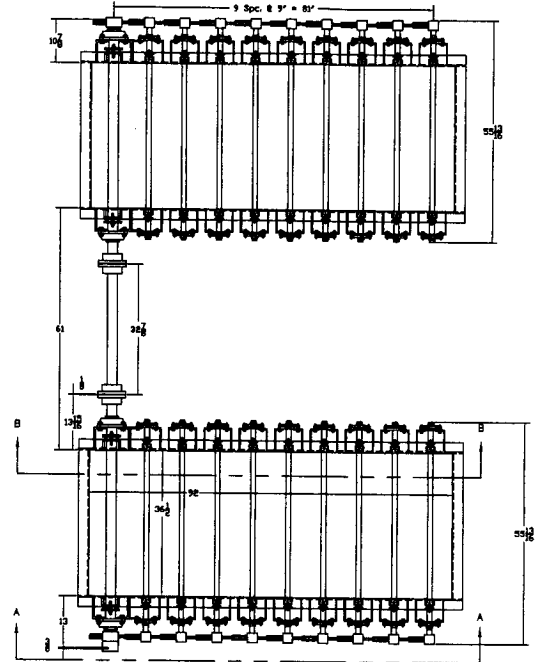


Typ. Flange Detail

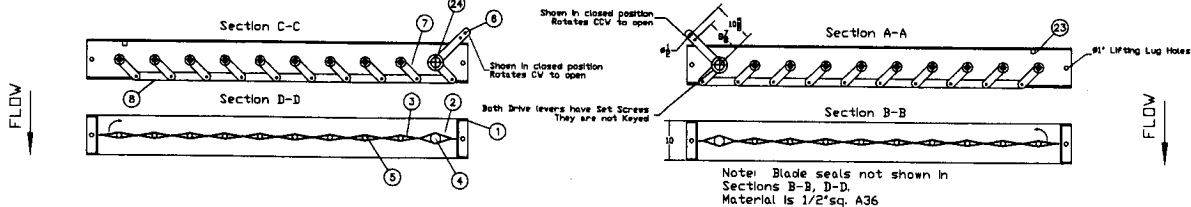
### Left Side Damper Set



### Right Side Damper Set



Set Screw	24	3/8"-18x1" UNC	2
Blade Stop	23	1-1/4"x1-1/4"x3/16" A36	2
Coupling Shaft	22	#2-1/2" 1018CR	1
Amerigear Flex Coupling	21	Series F Size 202	2
S.E.P.C.O. Packing	20	1/2" sq. Teflon	AR
Dr. Packing Pusher	19	A36	2
Dr. Packing gland	18	A36	2
Mounting Hardware	17	5/8"-11 Gr.5 plt.	8
Dodge Dr. Bearing	16	SCM-4 bolt	2
Dr. Bearing Bracket	15	5"x3"x3/8" A36	4
S.E.P.C.O. Packing	14	1/4" sq. Teflon	AR
Packing Pusher	13	A36	18
Packing Gland	12	A36	18
Mounting Hardware	11	7/16"-14 Gr.5 plt.	36
Dodge Bearing	10	SC-2 bolt	18
Bearing Bracket	9	5"x3"x1/4" A36	36
Drive Linkage	8	1/2"x2" A36	36
Driven Levers	7	A36	18
Drive Levers	6	A36	18
Driven Shafts	5	#1-1/4" 1018CR	9
Drive Shaft	4	#2-1/2" 1018CR	1
Driven Blades	3	10 Ga. A36	9
Drive Blade	2	10 Ga. A36	1
Frame	1	C10x20 A36	1
ITEM NAME	ITEM	DESCRIPTION	QTY
BMAT			



#### Notes:

1. Flow arrows to be stenciled on damper
2. Damper to be completely assembled and operated before shipping.
3. With blades in full open position, shop to locate and weld in place (3 sides) blade stop angle as shown. One (1) nearside top of blade and one (1) far side top of blade.

CUSTOMER:  
 CUSTOMER P.D.:  
 QTY: Four (Two Sets)  
 EST. WT: 1325 Lbs. Ea.  
 PAINT: Hi-Temp Black  
 AHS JOB NO#: 2595

PLEASE CONTACT THE PROJECT MANAGER FOR ANY CHANGES TO THIS DRAWING. ALL DIMENSIONS ARE IN INCHES UNLESS OTHERWISE SPECIFIED. DIMENSIONS IN PARENTHESES ARE FOR INFORMATION ONLY.

REV. RECORD		P.O. Box 8 Harrods Rd. Waterford, Oh 45784 (614) 984-2146	
REV.	DESCRIPTION	DATE	BY
1	DRAWN BY: kg	DATE	BY
2	CHECKED BY:	DATE	BY
3	APPROVED BY:	DATE	BY
TITLE		Parallel Louver Dampers	
DRAWING NO.		2595-001	